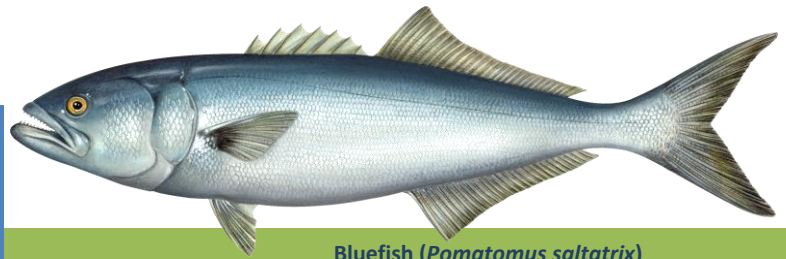


**CT DEEP** **2016**  
**FISHING REPORT NUMBER 20**  
**8/25/2016**



Bluefish (*Pomatomus saltatrix*)



Find us on  
**Facebook**

**YOU CAN FIND US DIRECTLY ON FACEBOOK.** This page features a variety of information on fishing, hunting, and wildlife watching in Connecticut. The address is [www.facebook.com/CTFishandWildlife](https://www.facebook.com/CTFishandWildlife).

**SHARE THE EXPERIENCE**  
Take someone fishing

## INLAND REPORT

**LARGEMOUTH BASS** fishing is generally reported as fair to good (with a few tough spots). Night fishing is productive. Try black jitterbugs and surface poppers. Places to try include Lake McDonough, West Hill Pond, East Twin Lake, Gardner Lake, Pickerel Lake, Beseck Lake, Amos Lake, Beach Pond, Highland Lake, Seymour Reservoir #4, Crystal Lake, Mudge Pond, West Side Pond, Tyler Lake, Mansfield Hollow Reservoir, Dog Pond, Hatch Pond, Park Pond, Lake Wononskopomuc, Lake Saltonstall, Bishop Swamp, Winchester Lake, Congamond Lakes, Quinebaug Lake, Black Pond (Meriden), Burr Pond, Griggs Pond, Anderson Pond, Billings Lake, Moodus Reservoir, Aspinook Pond, Babcock Pond, Pachaug Pond, Lake Hayward, Quonnipaug Lake, Rogers Lake and Stillwater Pond.

**Tournament angler** reports are from Gardner Lake (fair action, a 3.13 lb lunker, but not much else for any size), Long Pond (slow to fair, but with a 6.13 lb lunker), Pachaug Pond (fair to good action, with a nice 6.3 lb lunker for one club, and 4.8 lbs for another), Quaddick lake (good fishing, 4.4 lb lunker), Candlewood Lake (fair with better action at night for one club, 5.03 lb, 4.71 lb and 4.56 lb lunkers), East Twin Lake (fair to good, 3.88 lb lunker), Lake Lillinonah (fair for largemouth, 3.56 lb lunker), Lake McDonough (fair action at best, only a 2.14 lb lunker), and the Connecticut River (slow, 3.24 lb lunker).

**SMALLMOUTH BASS.** Catches reported from Candlewood Lake, Housatonic River (Upper), Naugatuck River, Lake McDonough, Lake Zoar and Lake Lillinonah. Housatonic River smallmouth fishing has been good.

**Tournament angler** reports are from Candlewood Lake (fair to good, 5.16 lb and 5.05 lb lunkers), Lake Lillinonah (fair to good for smallmouth, 3.45 lb lunker), Lake McDonough (a few in the Bags), Pachaug Pond (some), and the Connecticut River (slow. 3.06 lb lunker).

### SAVE THE DATES

### **Connecticut Hunting & Fishing Days**

**Saturday, September 10<sup>1</sup> & 24<sup>2</sup>, 2016.**

**10 am-4 pm**

Join us as we continue celebrating [150 years](#) of natural resource conservation and thank you for your support. Each event has fun activities for all ages, educational programs, a live raptor programs, information about hunting and fishing, door prizes, and more. Best of all, the events are free to attend!

Get all of the details at

[www.ct.gov/deep/huntfishday](http://www.ct.gov/deep/huntfishday)

<sup>1</sup>September 10 at [Franklin Wildlife Management Area](#), Franklin

<sup>2</sup>September 24 at [Sessions Woods Wildlife Management Area](#), Burlington.

**CARP** were caught in Lake Housatonic, Connecticut River, Lower Farmington River, Quinebaug River, Batterson Park Pond, and Aspinook Pond. Look for the 2016 CT CARP open tournament coming this October.

**FALLFISH** The largest native minnow to Connecticut, Fallfish can reach over 15 inches (typically 8-12 inches). Fall fish provide excellent action on ultra-light tackle and fly rods. The fish are aggressive and will hit a variety of natural and artificial baits (use the same gear you would for trout). Fishing for Fallfish is a great way to spend time on a river (when water temperatures may be too warm for trout or it seems to be fished out). Good Fallfish waters include the Willimantic River, Shetucket River, Natchaug River, Lower Farmington River (Avon-Windsor), Housatonic River (Cornwall to Kent), Scantic River (Somers to East Windsor), and Yantic River. The current [state record](#) Fallfish (2.25 pounds) was taken in 2012 by Chad Tessman.

**KOKANEE SALMON** catches were reported from East Twin Lake (early morning) and West Hill Pond (early night fishing with corn, south end). Target 30-35 feet with down riggers on beads.

**NORTHERN PIKE** decent fish reported from Mansfield Hollow Reservoir, Lake Lillinonah, and CT River.

**CATFISH** – Good fishing is ongoing in our [Catfish Management Lakes](#) including; Black Pond (Middlefield), Spaulding Pond (Norwich), Beardsley Park Pond (Bridgeport), Butternut Park Pond (Middletown) and Silver Lake (Meriden).

**PANFISH** has been excellent this season so far. For some great summer time fun try shore fishing in shallow areas. This simple and inexpensive method is the best way to get into them, small grubs, worms or shiners and bobber will put fish in your creel. Both small local ponds and larger waters work great. Areas reporting action include Wood Creek Pond, Tyler Lake, Lake Hayward, Morey Pond, Peck Pond, Crescent Lake (Southington), West Side Pond, Freshwater Pond, Dog Pond and Zeiner Pond.

**TROUT-LAKES & PONDS** - Some lakes are still producing fair to good fishing, with reports from Lake McDonough (orange/silver Flash Kings at 7 colors, near outlet), East Twin Lake (Thinfish Copper; Mooselook Wobbler blue/silver at 30 feet), Beach Pond (Kobra 114, 18 or 5, rigger at 23' feet), Long Pond (streamers), West Hill Pond (south end), Crystal Lake (Ellington, at 7-8 colors, 40 feet of water) and Highland Lake (second bay, 25-30 feet).

**TROUT- RIVERS & STREAMS** - Conditions should be fair again this weekend. This week's nighttime temperatures in the low 50's will begin to bring water temperatures better levels for trout. Streams in northwestern CT are still at or near record lows, while central and eastern streams are a bit below typical flows— *see stream flow graphic on page 6*. The best trout fishing will be early mornings following a crisp cool night.

**Farmington River** - Fishing has been good on the West Branch (Hartland to New Hartford) and conditions should be good for the weekend. Water temperatures are

### **Thermal Refuges are Critical**

Thermal refuges are places where cold groundwater seeps or drains into a waterbody. These areas have much lower water temperature than the surrounding main waterbody.

Between June 15 and September 15 mainstem water temperatures can be above lethal limits for trout. Refuge area in medium to large rivers like the Naugatuck, Salmon, Housatonic, and Shetucket, are critical for trout to survive the summertime warm water temperatures.

To protect the trout, all fishing is prohibited in and around all refuges as indicated by signage (below). Please do not disturb the trout that are seeking refuge within these areas and report any violations to DEEP law enforcement immediately 860-424-3333.



in the mid 60's°F in the upper part of the River and mid to upper 70's in the Collinsville/Unionville section (with closure around key tributaries). Flows are clear and low (currently 78 CFS at Riverton, with the Still River adding an additional 9 CFS).

**On Thursday, August 18, due to high water temperatures and low flows, eight thermal refuges where all fishing is prohibited were established on the West Branch Farmington River and the Farmington River.** These areas are at the mouths of the following tributaries to the West Branch Farmington and Farmington rivers: East Mountain Brook (Hallock Brook, New Hartford), Cherry Brook (Canton), Rattlesnake Hill Brook (Canton), Burlington Brook (Burlington), Hawley Brook (Avon), Unionville Brook (Unionville), Hyde Brook (Unionville), and Pequabuck River (Farmington) (see page 4 for more details).

**Hatches/patterns** be diverse as there is a variety of insects (none of which are in super numbers) active on the river. Some go to patterns including Tricos (*Tricorythodes* #22-24 in the morning; started in the mid-section of the river), *Ephemerella needhami* (#22-26, early morning), Leadwing Coachman (*Isonychia bicolor*, #12-14, fast water, afternoon/evening), Blue Wing Olives (*Drunella* sps. & *Baetis* sps.; #18, 22-24, mid-late afternoon), Caddis (tan #16-20, all day; green #22-26, evening; summer pupa #18-20 morning), Cahills/Summer (*Stenonema ithaca*, #12-14, early morning), Midges (#22-28, morning), Black Ants (#12-18, mid day in fast water), Black Beetles (#16-18, midday), Flying Ants (#18-22, midday, when windy/humid), Stone Hopper (#8-12, mid-day). Got insomnia? Try fishing the pre-dawn hours with large gear (frog or mouse pattern or very large streamers) - giant browns are on the hunt looking for a sizable meal.

**Housatonic River** – Overall, fishing has been very good, and conditions for the weekend should remain good, especially for Smallmouth Bass. Flows are clear and are on a slow decrease following last week's rain (currently 78 CFS at Falls Village and 220 CFS at Gaylordsville). Morning water temperatures are currently in the mid 70's °F (and rising through the day).

Smallmouth (and Fallfish) are plentiful throughout the entire river and will eagerly hit a variety of poppers, dry flies, nymphs, and streamers. Patterns to try include White Zonkers, Wooly Buggers (go big- larval dobsonflies can be up to 4" in length and are a favorite food item), Muddlers, Grey or Black Ghosts (#4-10). Other insects that may be hatching sporadically include; Light Cahill (#12-14, evening), *Isonychia* (#10-12), Sulfur (#16-18) and Black caddis (#14-18, early morning & evening).

## CONNECTICUT RIVER

**LARGEMOUTH BASS** are being taken in the coves in the mid to lower river. Last week, **SMALLMOUTH BASS** were caught in the northern river (Windsor & Enfield area). Small to medium size bait were working well. Try 3-4 inch rubber worms on 3/8 ounce football jigs or 2.5 inch paddle tail worms. Surface poppers in that size range can also be effective. **CARP** are being caught in the upper and lower river on pre-baited 'swims'. Anglers are finding **CATFISH** by night angling in the Hartford to Middletown stretch. Try from just north of Hartford on downstream, fish the outside bends (deep holes are producing as well, try cut bait).

---

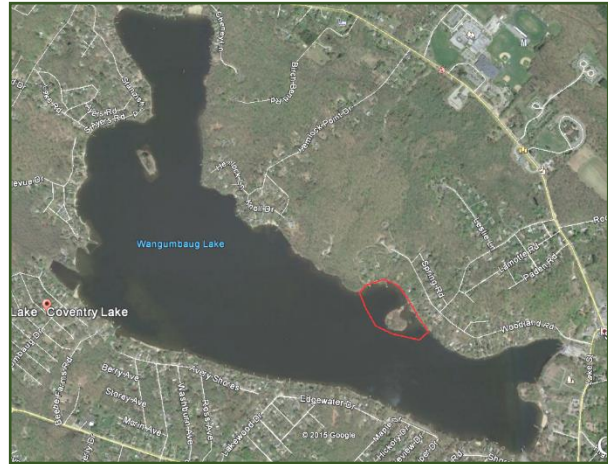
## NOTES & NOTICES:

**BASHAN LAKE (drawdown).** Bashan Lake remains drawn down (slow refill continues – lake currently remains down approximately 4-5 feet – note that refill rate is dependent on rainfall amounts) following dam repairs and the state boat launch remains closed.

**BRANFORD RIVER (boat launch).** The Branford River state boat launch is currently closed for renovations. This closure is currently expected to last to November 14, 2016. Alternative nearby launch sites include the Guilford Town boat launch and the East River State boat launch, both in Guilford.

**COVENTRY LAKE (invasive species alert).** Hydrilla, a very highly invasive aquatic plant, has been found growing in Coventry Lake. All lake users should take extra care to check and clean their boats (including canoes, kayaks and rowing sculls), trailers, and fishing equipment before leaving the boat launch, or leaving the lakeshore.

*Coventry Lake (Wangumbaug Lake) boaters should avoid the area outlined in red to avoid fragmenting and spreading hydrilla. This is only area in the lake where hydrilla has been found.*



**DOOLEY POND (drawdown).** A drawdown of Dooley Pond to facilitate dam repairs is ongoing (expected to last to September 1). The state boat launch is currently closed.

**GLASGO POND (drawdown).** A drawdown of Glasgo Pond to facilitate dam repairs is ongoing (began September 2015). Launching of boats is difficult to impossible.

**QUINNIPIAC RIVER (SOUTHINGTON – CHEMICAL RELEASE).** DEEP is recommending that the public avoid portions of the Quinnipiac River in Southington **from West Queen Street downstream to South Main Street (Route 10)** and avoid consumption of fish from this section of the river due to a chemical release (hexavalent chromium compound). Water quality sampling is ongoing to assess the impact of the release.

**LAKE ZOAR (waterski event).** A water ski clinic for the disabled is scheduled for **Saturday, August 27**, in the upper end of Lake Zoar (approximately the upper first mile of the lake below the Shepaug Dam). This event run from 9 am to 4 pm, and boaters are asked to take care when passing through this area (marked by buoys) of the lake, and avoid interfering with the event.

**THERMAL REFUGES:** **On Thursday, August 18, due to high water temperatures and low flows, eight thermal refuges were established on the West Branch Farmington River and the Farmington River.**

These areas are at the mouths of the following tributaries to the West Branch Farmington and Farmington rivers: East Mountain Brook (Hallock Brook, New Hartford), Cherry Brook (Canton), Rattlesnake Hill Brook (Canton), Burlington Brook (Burlington), Hawley Brook (Avon), Unionville Brook (Unionville), Hyde Brook (Unionville), and Pequabuck River (Farmington).

There are also thermal refuge areas on the Housatonic, Naugatuck and Shetucket Rivers. All thermal refuges are now closed to all fishing. These areas will all reopen on September 15. There is no fishing within 100 feet of signs indicating such closure at or near the mouths of tributaries to these rivers. Additionally, there is a thermal refuge on the Salmon River in East Haddam, located around a spring entering the Salmon River approximately 220 feet south of the unused paved boat launch at the state-



owned property formerly known as the Sunrise Resort off of Route 151. The refuge includes all water within 100 feet from the end of the pipe as posted. The Salmon River refuge is closed to fishing and access through September 15.

**GIVE WILDLIFE SOME SPACE** we would like to remind everyone to give wildlife appropriate space. Recently human wildlife interactions have been reported with Mute Swans (Lake Zoar) and Beaver (Quinebaug River). Remember- wild animals can be unpredictable.

---

**PHOTO CONTEST:** Do you have the next Angler's Guide cover shot? Email us your high quality (high resolution) photos at [Deep.inland.fisheries@ct.gov](mailto:Deep.inland.fisheries@ct.gov) and include [photo contest](#) in the subject line.

**CT FISHIN' TIPS** is our monthly e-newsletter dedicated to providing information, tips and pointers about fishing in Connecticut. Get CT Fishin' Tips delivered automatically to your in box by subscribing at [www.ct.gov/deep/newslettersubscription](http://www.ct.gov/deep/newslettersubscription)

**NEW!** Youth Fishing Passport [Fishing Challenge Scorecard](#): Download the new scorecard for your Youth Fishing Passport Holder on the program web page at [www.ct.gov/deep/yfp](http://www.ct.gov/deep/yfp). Top anglers will receive a great prize pack of fishing gear.

---

#### **ZEBRA MUSSELS REMINDER**

**Zebra mussels are now found in a number of locations scattered throughout the Housatonic River and its impoundments including Lake Lillinonah (since 2010), Lake Zoar (since 2010) and Lake Housatonic (since 2011).**

Prior to their discovery in Lakes Lillinonah and Zoar in 2010, zebra mussels had been found (1998) in CT only in East Twin Lake and West Twin Lake (Salisbury). Anglers fishing in any of these waters and western Connecticut in general **should use extra care to avoid transporting water, aquatic vegetation, and possibly zebra mussels to new locations.** Information

For more information including precautions that should be taken to prevent the spread of zebra mussels to additional waters, visit [www.ct.gov/deep/invasivespecies](http://www.ct.gov/deep/invasivespecies) or the Aquatic Invasive species section of the 2016 CT angler's Guide( [www.ct.gov/deep/anglersguide](http://www.ct.gov/deep/anglersguide)).



#### **REMINDER TO ANGLERS-**

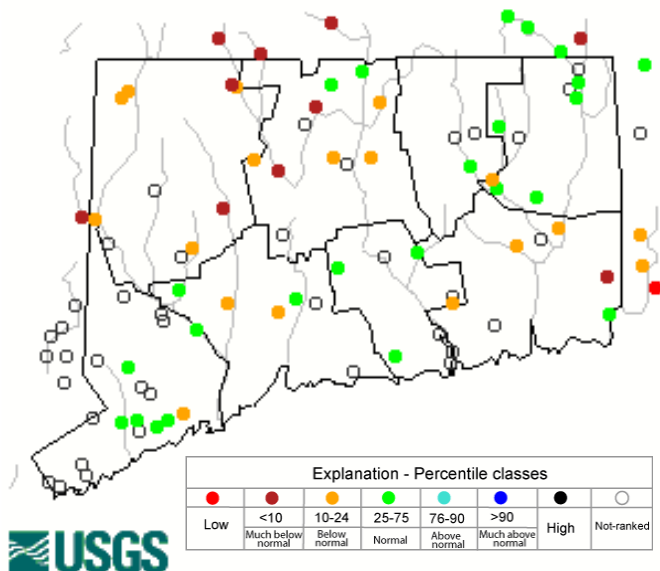
**FISHING IN OR CASTING INTO PERMITTED SWIM AREAS IS PROHIBITED.**

State regulations prohibit fishing in or into a swim area that's been permitted by DEEP. Additionally, vessels cannot be operated within a permitted swim area, and there's a 100 foot "no-wake" zone around the perimeter. Swim areas that have been permitted by DEEP will be marked by white buoys with orange markings, and there should be a permit number posted on the buoys. They may or may not have small orange barrier floats to further demarcate the area. Should questions arise concerning the validity of the swim area (*no permit numbers or the area appears to have been changed/enlarged or keeps moving*), please contact DEEP's Boating Division at 860-434-8638.



## Stream flow conditions as of 8/25/2016

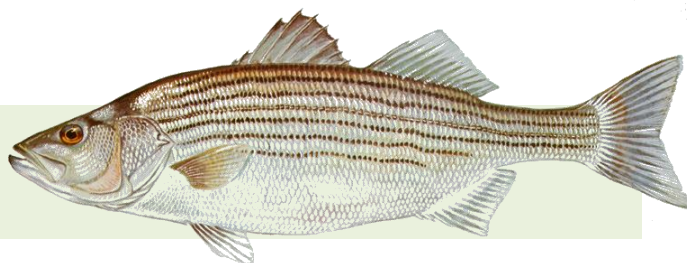
Thursday, August 25, 2016 16:30ET



Data in the state graphic to the left are generated by the United States Geologic Survey (USGS) and are available on line at: <http://waterdata.usgs.gov/ct/nwis/rt>

A percentile is a value on a scale of one hundred that indicates the percent of data in the data set equal to or below it. For example streamflow greater than the 75<sup>th</sup> percentile means only ¼ of the streamflow values were above the value and thus would be considered "above normal". Stream flow between the 25<sup>th</sup> and 50<sup>th</sup> are considered to be "normal flows" and those 25<sup>th</sup> or less are considered to be "below normal".

## MARINE FISHING REPORT



Surface water temperatures in Long Island Sound (LIS) continue in the upper 70's °F. Check out the following web sites for more detailed water temperatures and marine boating conditions:

<http://www.mysound.uconn.edu/stationstat.html>

<http://www.ndbc.noaa.gov/>

[http://marine.rutgers.edu/mrs/sat\\_data/?nothumbs=1](http://marine.rutgers.edu/mrs/sat_data/?nothumbs=1)

<http://www.wunderground.com/MAR/AN/330.html>

**IMPORTANT NOTES:**

**THE TAUTOG (BLACKFISH) FISHING SEASON WILL CLOSE SEPTEMBER 1, RE-OPENS OCTOBER 10<sup>TH</sup>.**

**NEW SHARK REGULATIONS – EFFECTIVE MONDAY, AUGUST 22, 2016:**

**Notice to Marine Anglers:** An Atlantic Highly Migratory Species (HMS) permit is required to take, possess, or land any shark species, other than smooth or spiny dogfish, in this state.

To obtain an **HMS permit** visit: <http://www.greateratlantic.fisheries.noaa.gov/aps/permits/> or call NMFS Customer Service Center at (888) 872-8862.

CT Marine anglers may catch Sand Tiger and Sandbar (Brown) Shark which are protected and prohibited species and must be released unharmed.

**IF YOU DON'T KNOW, PLEASE LET IT GO!** [Coastal shark information](#).

**Connecticut State Boundary Line in Long Island Sound.** Anglers please note: Though Connecticut has reciprocity with neighboring states (New York, Rhode Island, Maine and Massachusetts), residents of Connecticut are required to have a CT Resident Marine Waters Sport Fishing License to fish in the Marine District.

**WHALES** have been reported in Long Island Sound (in early July, juvenile humpback whales have been spotted on the New York side of the sound), please see check [WHALE WATCHING GUIDELINES](#).

**Note:** All marine mammals are protected by the Federal Marine Mammal Protection Act. Following these recommended operational guidelines helps minimize chances of harassing or injuring whales and violating Federal law. Guidelines apply to all large whales from Maine through Virginia, except North Atlantic right whales. It is illegal to approach a right whale within 500 yards (1500 feet) unless granted specific exemption or authorization.

**SEA TURTLES:** [See a Tangled Turtle? Call the Hotline!](#) 1-860-572-5955 ext. 107. This is the time of year when leatherback, loggerhead, green, and Kemp's ridley sea turtles return to northern waters, with many sightings around Long Island Sound.

---

**STRIPED BASS** fishing remains very good at night after the full moon. Live lining bunker (Atlantic menhaden) on the reefs at dawn and dusk still producing some nice bass (55 inches – 66 pounds, (West Haven/Woodmont). Striper spots include the Watch Hill reefs, Ram Island Reef in Fishers Island Sound, lower Mystic and Thames River, the Race, Sluiceway, Plum Gut, Pigeon Rip, outer Bartlett Reef, Black Point, the “humps” south of Hatchett Reef, lower Connecticut River, Long Sand Shoal, Cornfield Point, Southwest Reef (outer), Sixmile Reef, Falkner Island area, the reefs off Branford, New Haven Harbor and the upper reaches, Charles Island area, lower Housatonic River, buoys 18 and 20 off Stratford Point, Stratford Shoal/Middle Ground, Penfield Reef, around the Norwalk Islands, and Cable and Anchor Reef.

***Don't have a Boat? Hook up with the many [Party or Charter Boats](#) found throughout CT's shoreline from Greenwich to Stonington.***

**STRIPED BASS ANGLERS FISHING IN RHODE ISLAND WATERS** - are advised that the state of Rhode Island has adopted the following regulations pertaining to striped bass. These regulations apply to all Rhode Island state lands and waters including the waters around Block Island: **“Any person recreationally harvesting a striped bass thirty-four (34) inches or larger shall at the time of harvest have the right pectoral fin removed at a point as close to the body of the fish as possible.”**

**BLUEFISH** fishing is improving daily in the east. Central and western sound anglers continue to wait for large numbers of bluefish to arrive, especially around tournament time. Eastern Sound has seen much better fishing for “alligator” blues. Bluefish fishing spots include the reefs off Watch Hill, the Race, Thames River, Sluiceway, Plum Gut, Pigeon Rip, lower Connecticut River, Long Sand Shoal, Sixmile Reef, Falkner Island area, New Haven Harbor and upper reaches, lower Housatonic River, buoys 18 and 20 off Stratford Point, Stratford Shoal/Middleground, Penfield Reef, and Cable and Anchor Reef. **SNAPPER** fishing has improved in the tidal creeks and rivers with fish measuring 6 to 8 inches in length.

**BLACK SEA BASS** fishing has been very consistent in the east. Plan a trip on a [party charter boat](#) trip to fish off of Block Island...there are many giant-sized sea bass out there. Eastern Sound (Fishers Island to Block Island and northeast of Montauk) anglers are having better success. Fishing is still good on the major reefs in the eastern Sound. For those willing to travel, Block Island Sound is the place to be for humpback sea bass. Closer to home, the rocky reefs from Niantic, to Branford (Faulkner Island) have been consistent all season. A reminder to all anglers...if you are fishing in water deeper than 100', barotrauma can cause released fish to struggle to make it back to the bottom. A descending device such as the Shelton Fish Descender can help assist the sea bass air bladder to recompress and get safely back down to the depths. See [Fishsmart.org](http://Fishsmart.org) for more information.

**SUMMER FLOUNDER** (fluke) fishing is fair but you have to put your time in to land legal –sized fish. Still some double digit doormat fluke being caught by lucky anglers. Apparently, the bite is in very shallow water (4 to 15 feet). Hit those beach areas where all the bait is. Live lining snapper blues in deep water (80 to 100') is the preferred method by fluke sharpies. The usual summer flounder spots include the south shore of Fishers Island (Isabella Beach, Wilderness Point), Napatree Point and along the beach, off the Stonington breakwater, mouth of the Mystic River over to Groton Long Point, Twotree Island Channel, Black Point/Niantic Bay including the Bloody Grounds, Sound View Beach, Long Sand Shoal, Falkner Island area, New Haven Harbor, off the mouth of the Housatonic River during the flood tide, and around the Norwalk Islands.

**SCUP** (porgy) fishing is good throughout Long Island Sound. The central and western Sound is loaded with hubcap size (15+ inches in length) fish. In the west the Norwalk area (Cockenoe Island) is fishing very well. If possible, take a trip to the east, southeast of Block Island (great fishing). Otherwise, some good locations in the west are: the lower Housatonic River to Charles Island, Morningside (Milford), Coast Guard Jetty at Southport Beach, Rick Jetty at Calf Pasture beach, **South Benson Fishing Pier, Sherwood Island, Pleasure Beach Fishing Pier, St Mary's by the Sea and Stratford wall along with Long Beach** (excellent shore spots). Other shore spots include **Rocky Neck State Park**, Harkness Memorial State Park, **Meigs Point Hammonasset**, Sherwood Island State Park and Fort Trumbull State Park. Fish during the high tide at these shore locations. Locate your favorite [Enhanced Shore Fishing Opportunities](#) for these hard fighting and excellent eating "Reef Slammers".

**ATLANTIC BONITO & LITTLE TUNNY** fishing is sporadic...here today and gone tomorrow is the news. They are tough to spot in rough seas. Flat seas are the best for sight fishing. These small tunas are cruising around from Pt. Judith, Watch Hill to Pine Island (including Fishers Island Sound), the Race to Little Gull Island, from Bartlett Reef to Black Point and west to New Haven. Dawn is the best time to fish for these inshore tunas. **Try casting metal (heavy) lures to feeding fish on the surface. A quiet approach and finding birds (gulls/terns) actively feeding is the key to a successful trip.**

**HICKORY SHAD** fishing is fair in the Black Hall River/Lieutenant River and the lower Connecticut River (DEEP Marine Headquarters fishing pier). Fishing remains good at Fort Trumbull, Black Hall, Clinton Harbor River systems and the lower Connecticut River (DEEP Marine Headquarters fishing pier). Both snappers and hickory shad can be found schooling together at these locations.

**WEAKFISH** fishing is improving daily in the western Sound. Many scup anglers are catching them. Fish up to 28 inches are being reported. Also, look for weakfish in Guilford/Madison/New Haven Harbor areas.

**BLUE CRAB** fishing continues to be good in all tidal creeks and bays. Incoming tide has produced better crab fishing...as the crabs migrate into the shallow water to feed. **Remember...** all egg bearing females must be released **without avoidable injury**. Minimum carapace length is 5 inches for a hard shell crab. **Blue crab fishermen please release all diamondback terrapins' caught in your traps. The turtles must**



**be released without avoidable injury.** Legal gear types include: scoop (dip) net, hand line, star crab trap, circular (topless) trap not exceeding 26 inches in diameter. Maryland Style Crab traps are prohibited. **Chicken with the skin on it (along with a long handle net) and a small circular crab trap is the preferred method to capture these tasty crabs.** [Blue Crab Fact Sheet](#) *Angler's please also note: It's illegal to snag blue crabs.*

**GOT A FISHING REPORT - PLEASE EMAIL US AT** [deep.marine.fisheries@ct.gov](mailto:deep.marine.fisheries@ct.gov)

**NOTABLE CATCHES:**

<i>species</i>	<i>Length (inches)</i>	<i>Weight (lbs)</i>	<i>name</i>
Blue Crab	8"	15 oz.	Albert Zuppe
Striped Bass	55 ½"	66 lb. 13 oz.	Albert Zuppe
Striped Bass	46 ½"	47 lb.	Alyssa Zuppe
Black Sea Bass	24"	4 lb. 1 oz.	Michael Forster
Red Drum	38.5"	19 lb. 13 oz.	Joe Diorio

---

**For Current Connecticut Recreational Fishing Regulations:** Anglers should consult the 2016 Connecticut Anglers Guide which is now available at most Town Clerks Offices, DEEP offices and at tackle stores selling fishing licenses. Current regulations, electronic versions of the Angler's Guide and additional information can all be accessed on the DEEP website at: [www.ct.gov/deep/fishing](http://www.ct.gov/deep/fishing).

The Connecticut Department of Energy and Environmental Protection is an Affirmative Action/Equal Opportunity Employer that is committed to complying with the requirements of the Americans with Disabilities Act. Please contact us at (860) 418-5910 or [deep.accommodations@ct.gov](mailto:deep.accommodations@ct.gov) if you have a disability and need a communication aid or service; have limited proficiency in English and may need information in another language; or if you wish to file an ADA or Title VI discrimination complaint.

**DEEP WEEKLY Fishing Report**



**Connecticut Department of  
ENERGY & ENVIRONMENTAL PROTECTION**

79 Elm Street, Hartford, CT 06106  
[www.ct.gov/deep](http://www.ct.gov/deep)

*Striped Bass image courtesy Duane  
Raver/USFWS.*